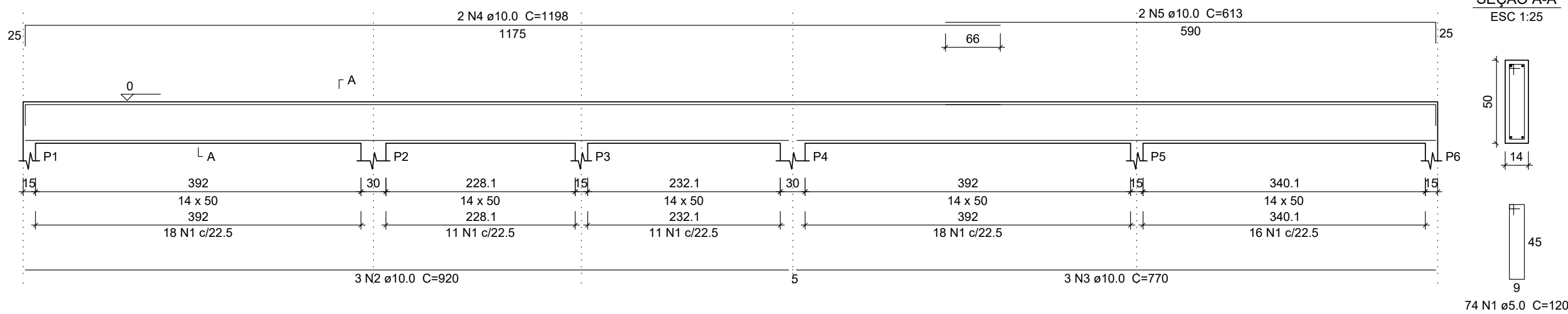


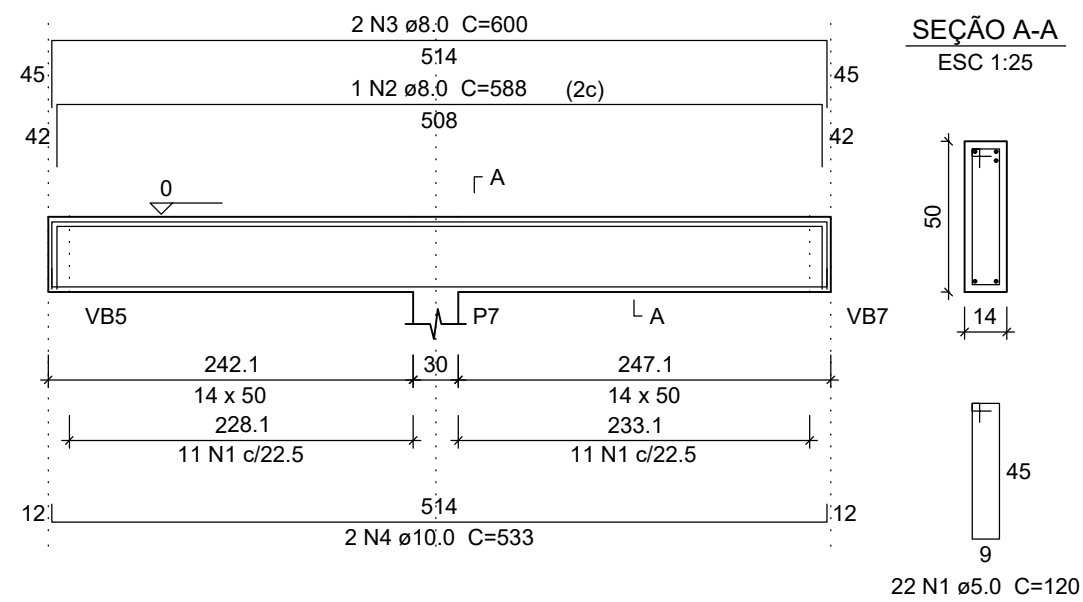
VB1

ESC 1:50



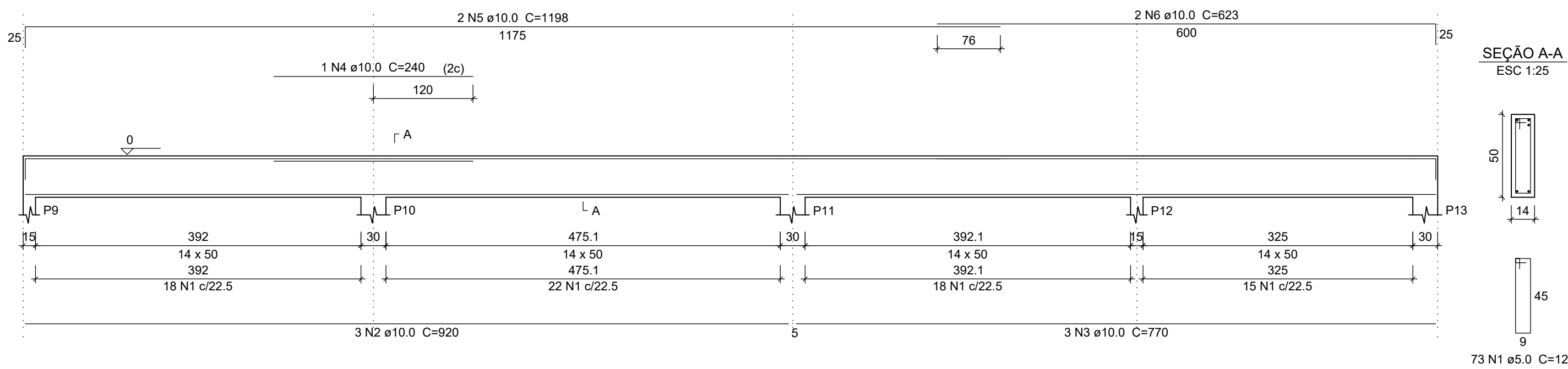
VB2

ESC 1:50



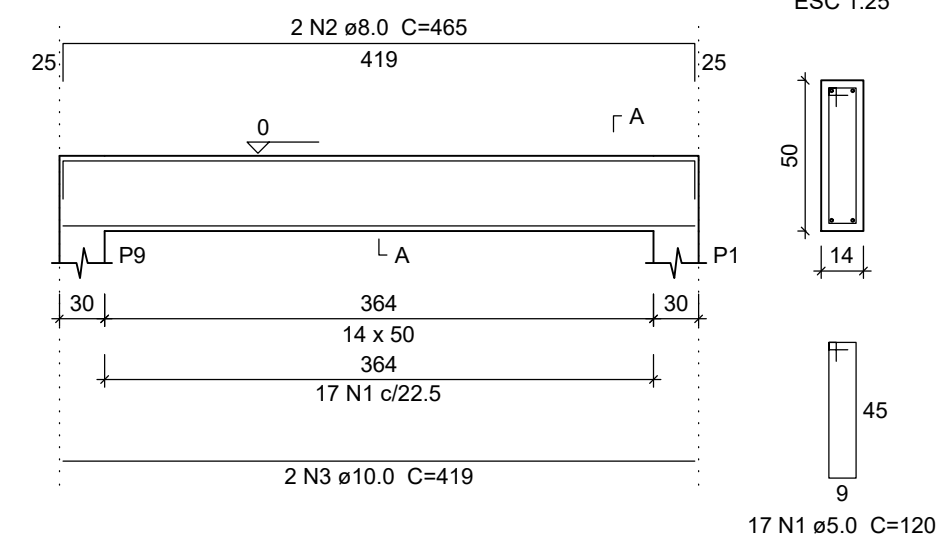
VB3

ESC 1:50



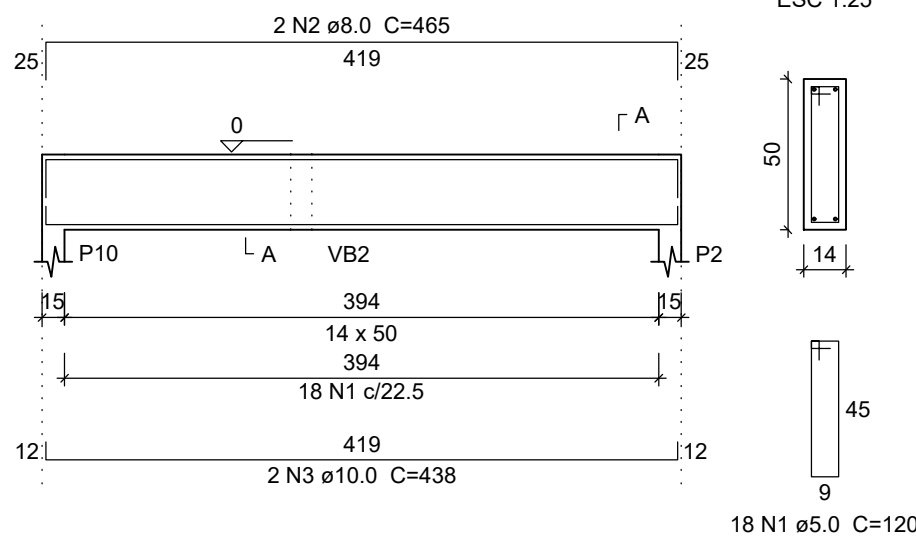
VB4

ESC 1:50



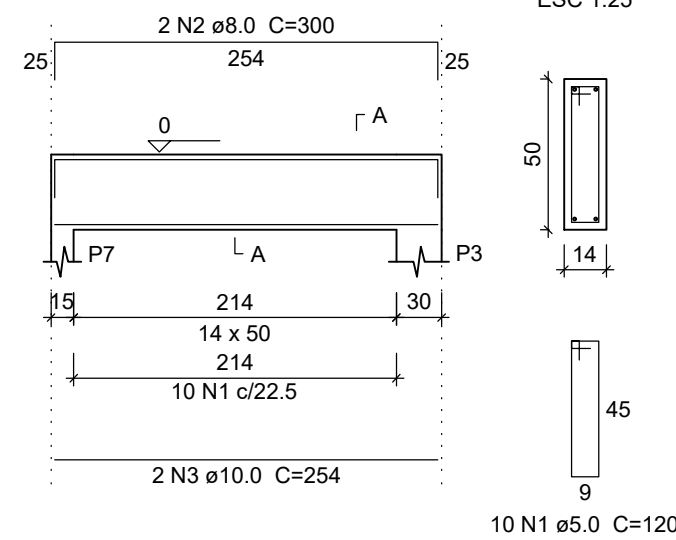
VB5

ESC 1:50



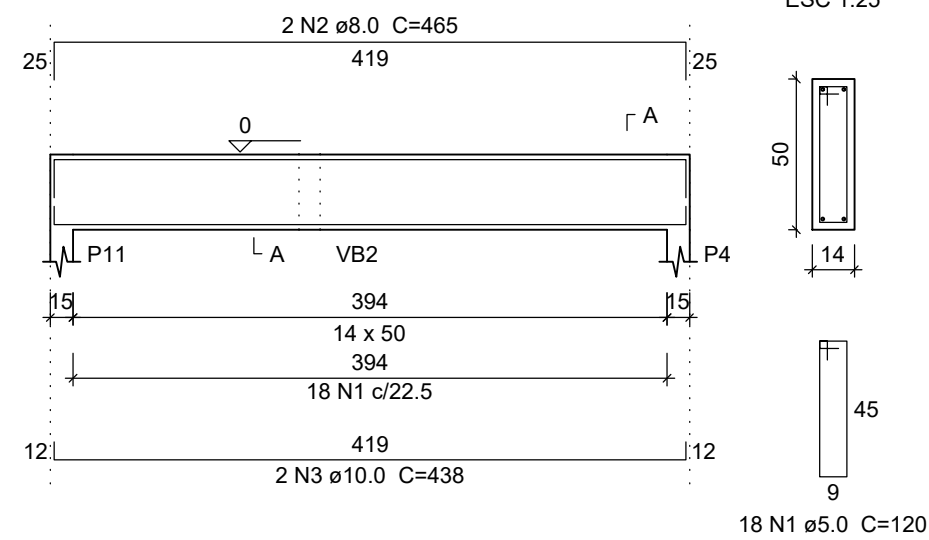
VB6

ESC 1:50



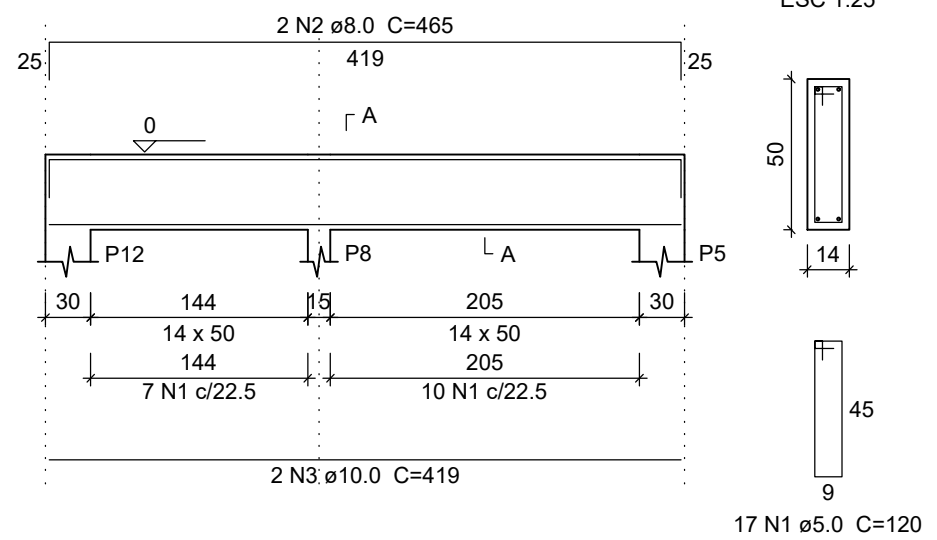
VB7

ESC 1:50



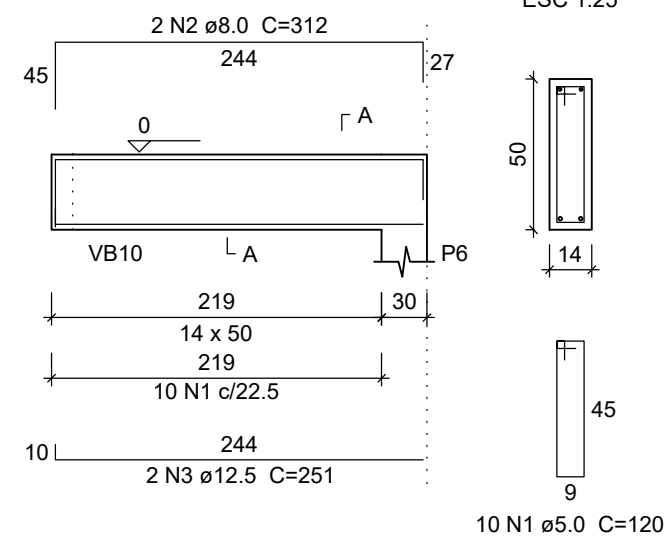
VB8

ESC 1:50



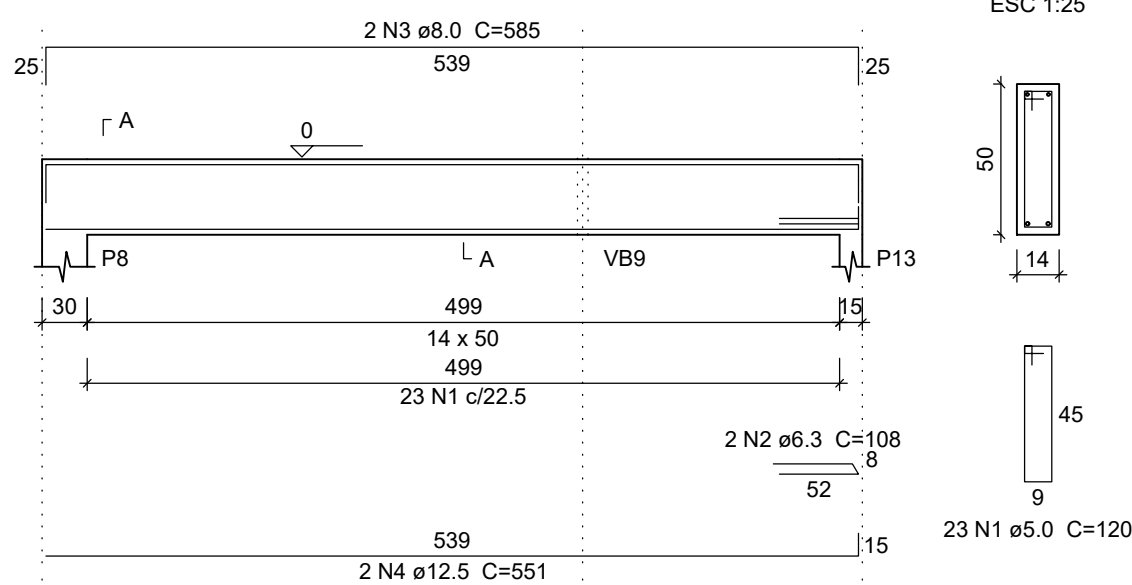
VB9

ESC 1:50



VB10

ESC 1:50



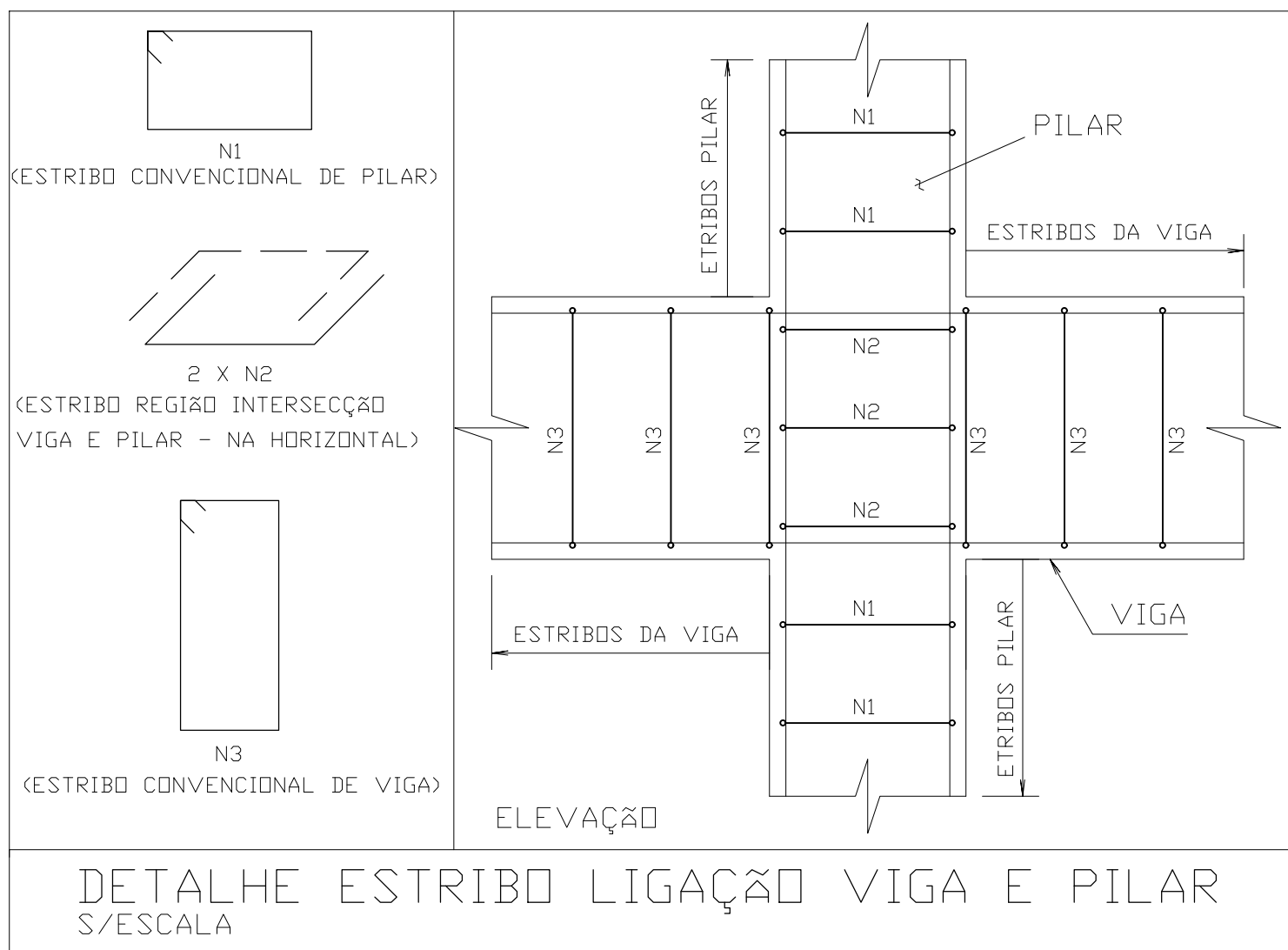
Relação do aço

ELEMENTO	AÇO	N	DIAM	Q	UNIT (cm)	C.TOTAL (cm)
VB1	CA60	1	5.0	74	120	8880
	CA50	2	10.0	3	920	2760
	CA50	3	10.0	3	770	2310
	CA50	4	10.0	2	1198	2396
	CA50	5	10.0	2	613	1226
VB2	CA60	1	5.0	22	120	2640
	CA50	2	8.0	1	588	588
	CA50	3	8.0	2	600	1200
	CA50	4	10.0	2	533	1066
	CA60	1	5.0	73	120	8760
VB3	CA50	2	10.0	3	920	2760
	CA50	3	10.0	3	770	2310
	CA50	4	10.0	1	240	240
	CA50	5	10.0	2	1198	2396
	CA50	6	10.0	2	623	1246
VB4	CA60	1	5.0	17	120	2040
	CA50	2	8.0	2	465	930
	CA50	3	10.0	2	419	838
	CA60	1	5.0	18	120	2160
	CA50	2	8.0	2	465	930
VB5	CA50	3	10.0	2	438	876
	CA60	1	5.0	10	120	1200
	CA50	2	8.0	2	300	600
	CA50	3	10.0	2	254	508
	CA60	1	5.0	18	120	2160
VB6	CA50	2	8.0	2	465	930
	CA50	3	10.0	2	438	876
	CA60	1	5.0	17	120	2040
	CA50	2	8.0	2	465	930
	CA50	3	10.0	2	419	838
VB7	CA60	1	5.0	10	120	1200
	CA50	2	8.0	2	312	624
	CA50	3	12.5	2	251	502
	CA60	1	5.0	23	120	2760
	CA50	2	6.3	2	108	216
VB8	CA50	3	8.0	2	585	1170
	CA50	4	12.5	2	551	1102

Resumo do aço

AÇO	DIAM	C.TOTAL (m)	PESO (kg)
CA50	6.3	2.2	0.5
	8.0	79.1	31.2
	10.0	226.5	139.6
	12.5	16.1	15.5
CA60	5.0	338.4	52.2
	PESO TOTAL		
CA50	186.8		
CA60	52.2		

Vol. de concreto total (C-25) = 4.67 m³
Área de forma total = 76.1 m²



CNPJ: 03507530/0001-19 Endereço: R. Tiradentes, 190, Chapada dos Guimarães - MT, 78195-000



OBRA: PROJETOS DE REFORMA E AMPLIAÇÃO DAS ESCOLAS NO MUNICÍPIO DE CHAPADA DOS GUIMARÃES-MT

PROJETO: PROJETO DE FUNDAÇÃO

LOCALIZAÇÃO: E.E. CEL. RAFAEL DE SIQUEIRA RUA SANTO ANTONIO, N.º. 350 - CENTRO - CHAPADA DOS GUIMARÃES-MT

AUTOR DO PROJETO: Eng.º Yuri Bispo Neves Vuolo CREA-MT : MT047573
RESP. TÉCNICO:
DESENHISTA:

ASSUNTO: DETALHES DOS BALDRAMES

ESCALA: COMO INDICADO UNIDADE: CENTÍMETRO DATA: MARÇO /2021
ÁREA CONSTRUÍDA: ÁREA COBERTA: ÁREA DO LOTE:

FOLHA N.º

4/4

64X1115